

JULY

AUGUST

SEPTEMBER

OCTOBER

1

3

5

2

4

Photo and video report



1 Preliminary studio

- Preliminary earth tests
- Visit to the surroundings areas to study the local context
- Photo and video report of the village conditions

DURATION **2 weeks****5** available places

2 Foundations

- Realization of foundations in stone and concrete
- Photo and video report
- Visit to Kumasi

DURATION **2 weeks****5** available places

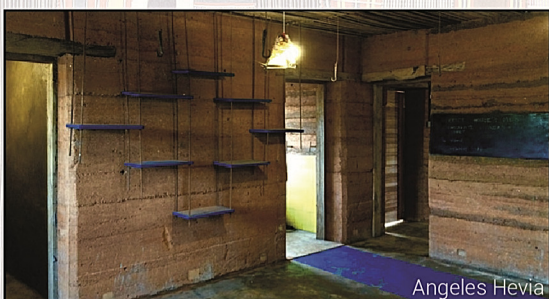
3 Walls construction

- Use of the rammed earth technique
- Experimentation of other techniques
- Photo and video report
- Visit to Ntonso Cloth Printing Village

DURATION **6 weeks****15** available places

4 Roofing

- Realization of the wood structure
- Realization of the corrugated metal sheet cover
- Photo and video report
- Visit to Asante traditional buildings UNESCO

DURATION **2 weeks****5** available places

5 Interior design and landscaping

- Organization of the interiors spaces
- Connection of the structure with the local context
- Photo and video report
- Visit to Bobiri Forest Reserve

DURATION **2 weeks****5** available places

The time for the realization of the different steps is approximate. It will depend on the **weather conditions**, the **material availability** and the relation with **local workers**. Every week we will talk about the project design to study specific solutions and refinements related with the **local community needs** and ideas.

During every sessions we will organize **field trips** to discover the Ghana culture and we will arrange specific **seminars** with local experts in order to understand the local construction methods and share our own knowledge with them.



Follow us on facebook:
eARThouse2016



www.load-project.com



NKA Foundation
www.nkafoundation.org